

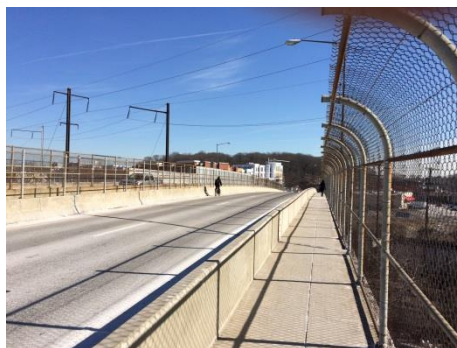
Project Update Newsletter

December 2014

Benning Road Transportation Improvements Environmental Assessment

The Federal Highway Administration (FHWA) and The District Department of Transportation (DDOT) are completing an Environmental Assessment (EA) for Benning Road NE. The project area is along Benning Road from Oklahoma Avenue to the Minnesota Avenue Metrorail Station and Benning Road Metrorail Station. Throughout the EA process, transportation improvements –including streetcar –were evaluated to determine the recommended multi-modal enhancements for the corridor for pedestrian, bike, roadway and transit facilities .

The purpose of the project is to implement multi-modal improvements to transportation infrastructure in the project area and to enhance safety and reliability of all modes between activity centers east and west of the Anacostia River along Benning Road.



The District Department of Transportation (DDOT) does not discriminate on the basis of actual or perceived: race, color, national origin, sex, age, marital status, personal appearance, sexual orientation, gender identity or expression, familial status, family responsibilities, matriculation, political affiliation, genetic information, disability, source of income, status as a victim of an intrafamily offense, or place of residence of business as provided by Title VI of the Civil Rights Act of 1964, the Americans with Disabilities Act, the D.C. Human Rights Act of 1977, and other related statutes. If you need special accommodations or language assistance services (translation or interpretation) please contact Malia Salaam at (202) 563-5003 or info@benningproject.com 72 hours in advance of the meeting. These services will be provided free of charge.

Visit us online: www.benningproject.com

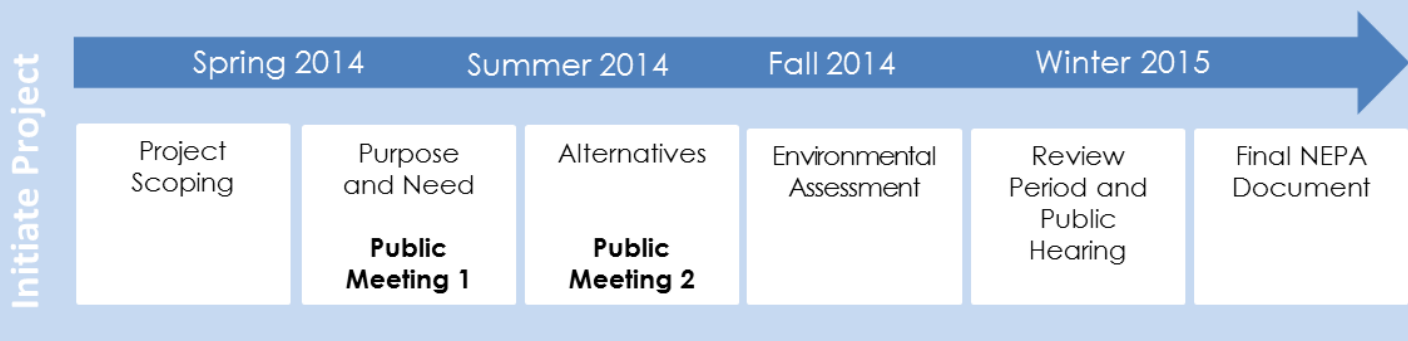


ENVIRONMENTAL ASSESSMENT (EA)

The project is being conducted per the requirements of the National Environmental Policy Act (NEPA), and includes agency coordination and an evaluation of historic resources per Section 106 of the National Historic Preservation Act.

During the project scoping phase in April, the Purpose and Need of the project was defined which helped establish a range of multi-modal transportation improvement options for further analysis. In May, during concept development, three streetcar terminus options for extending the H St/Benning Rd Streetcar east of the Anacostia River –to the Minnesota Ave Metrorail Station or to the Benning Rd Metrorail Station or both –and various track alignment options for public and agency feedback (a summary of preliminary concepts can be found online at www.benningproject.com). In September, two build and a “no-build” alternative were moved forward for detailed analysis in the Environmental Assessment.

NEPA Process and Section 106 Evaluation



PUBLIC OUTREACH

DDOT held two public open houses to share information and receive feedback on the EA. A summary of meeting material and public input can be found online at www.benningproject.com.

Public Meeting 1: Project Scoping

April 22, 2014, 6:30 – 8:00 p.m. at DOES

DDOT presented existing conditions information and the Purpose and Need of the project for public feedback:

- Improve Condition of Roadway & Bridge(s);
- Provide Additional Transit Options;
- Enhance Multi-Modal Safety;
- Improve Multi-Modal Access; and
- Support Land Use.

Attendees communicated that there is a need for safety improvements at the intersection of Benning Rd and Minnesota Ave for all modes; suitable river crossings for pedestrians and bikes; congestion relief; commercial access; and neighborhood branding/conservation.

Following the public meeting, DDOT prepared multi-modal concepts to address issues and opportunities identified by the public.

Public Meeting 2: Concept Development

May 28, 2014, 6:00 – 7:30 p.m. at DOES

At the second public meeting, participants discussed transportation improvement concepts with DDOT staff on large roll-out maps and communicated a need for continuous multi-use paths where feasible; safe and efficient streetcar operations with other modes; alternatives that have a minimal impact on adjacent land uses; and pedestrian safety improvements along Benning Rd near East Capitol St.

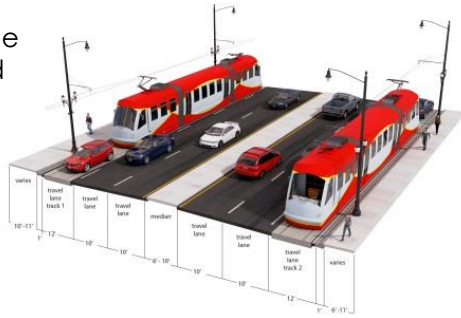
Where are we now?

The project team is currently working on developing the Environmental Assessment (EA) document that will include the assessment of all potential environmental impacts of the project. The EA is projected to be released in December-January time frame for 30 days public comments. Once the EA is released for public comments, a public hearing will be held.

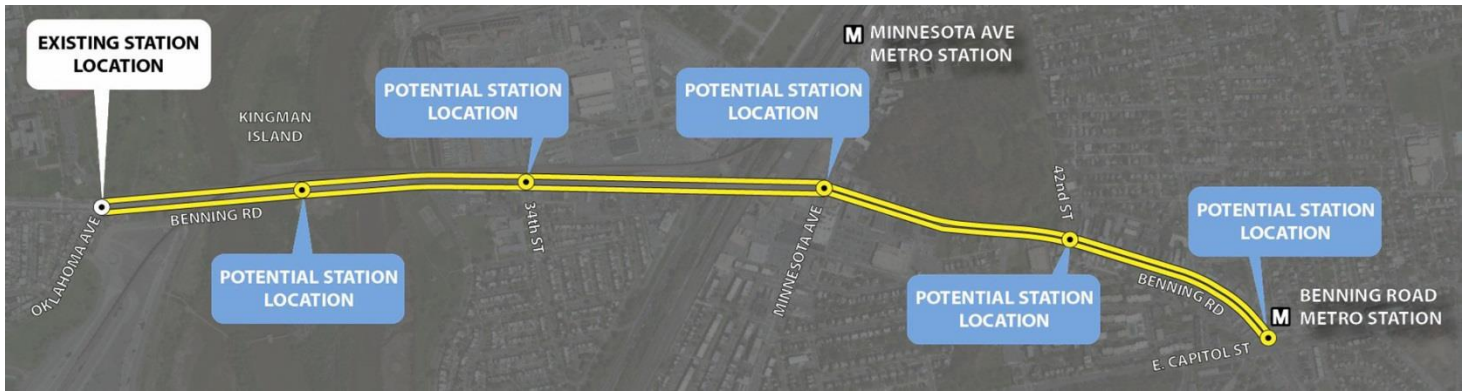
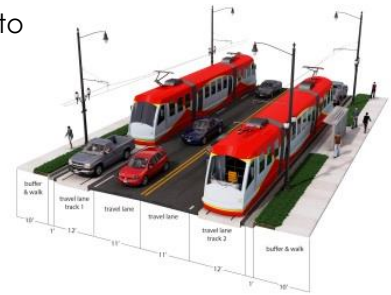
After the end of the comment period, based on the comments, impacts assessment and related factors the final NEPA decision will be made.

Curb Streetcar Option: a single track on each side of Benning Rd next to the curb

Oklahoma Avenue to Kingman Island

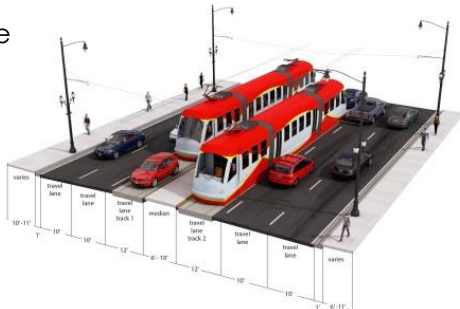


39th Street to 45th Street



Median Streetcar Option: both tracks in the center of Benning Rd

Oklahoma Avenue to Kingman Island



39th Street to 45th Street



Benning Road Transportation Improvements Environmental Assessment

GET INVOLVED

Please let us know of any comments or questions that you may have about the project. Call us at **(202) 563-5003**, or email us at **info@benningproject.com**.

The public will have the opportunity to review and comment on the Benning Road Transportation Improvements Environmental Assessment document this Winter prior to a final public hearing in early 2015.

Visit us online: www.benningproject.com

